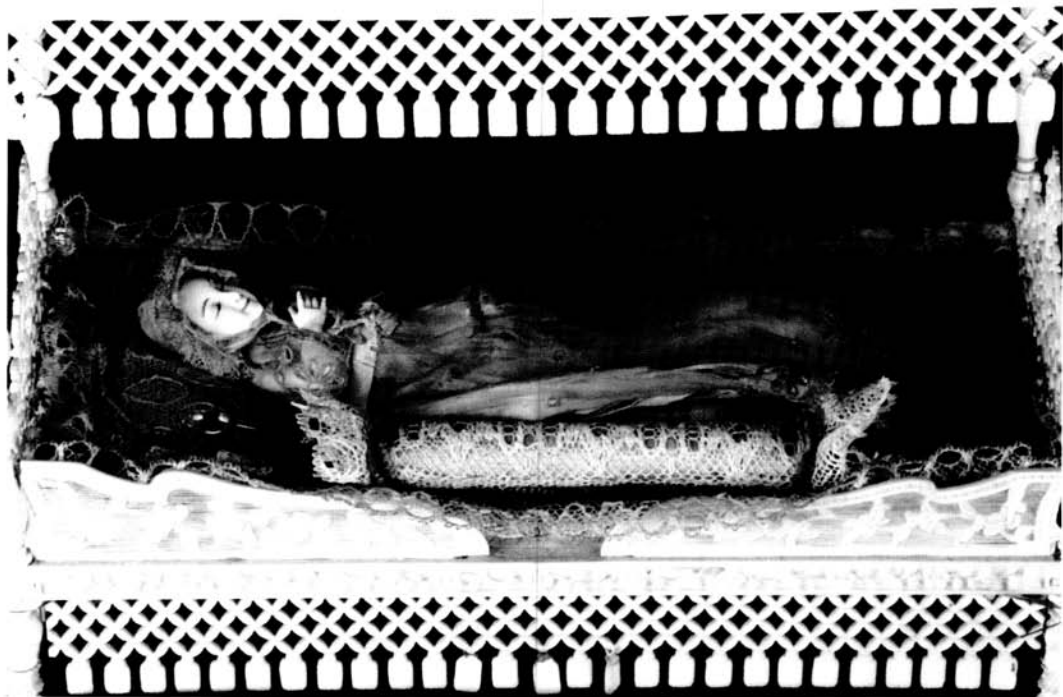
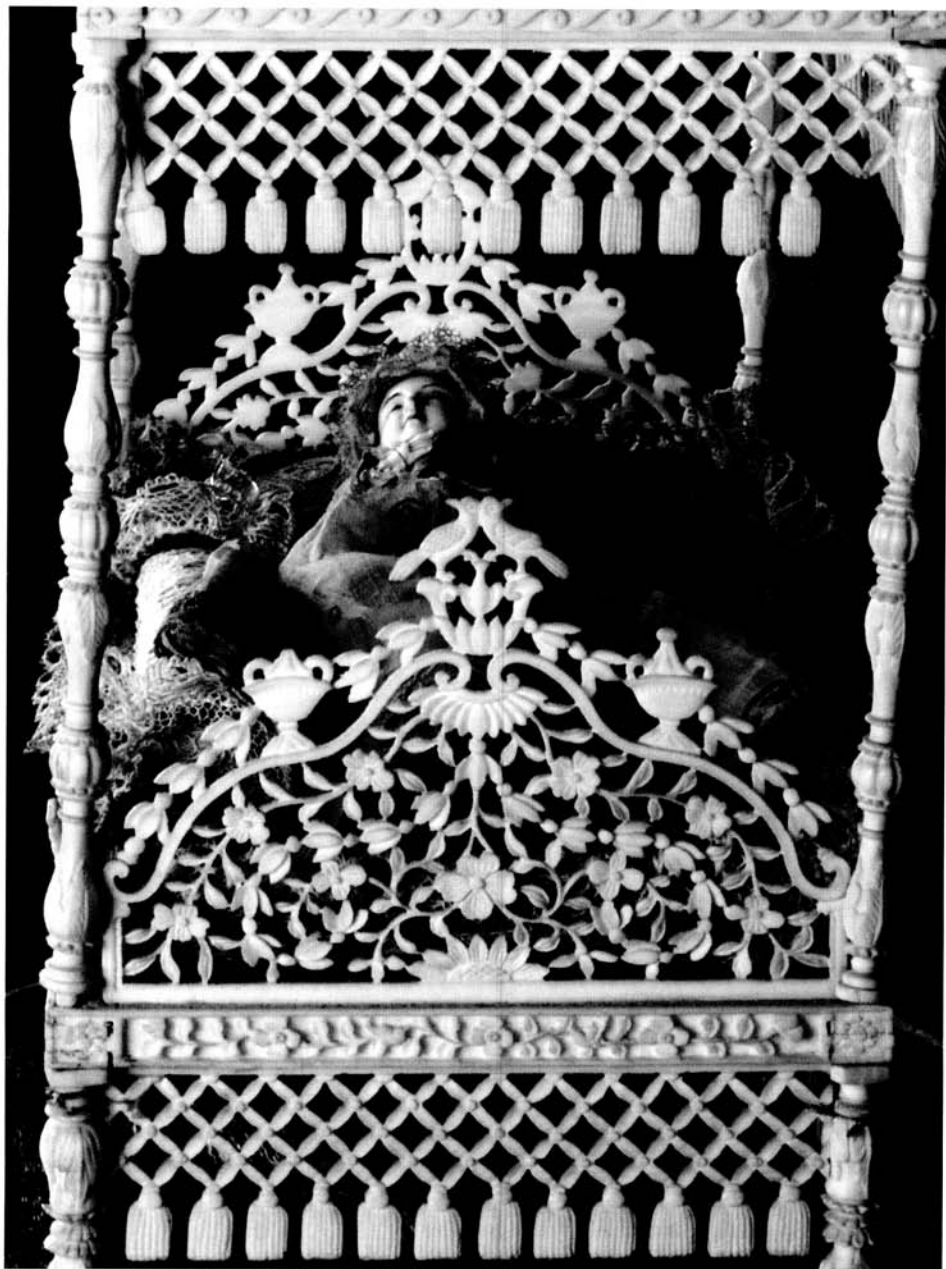


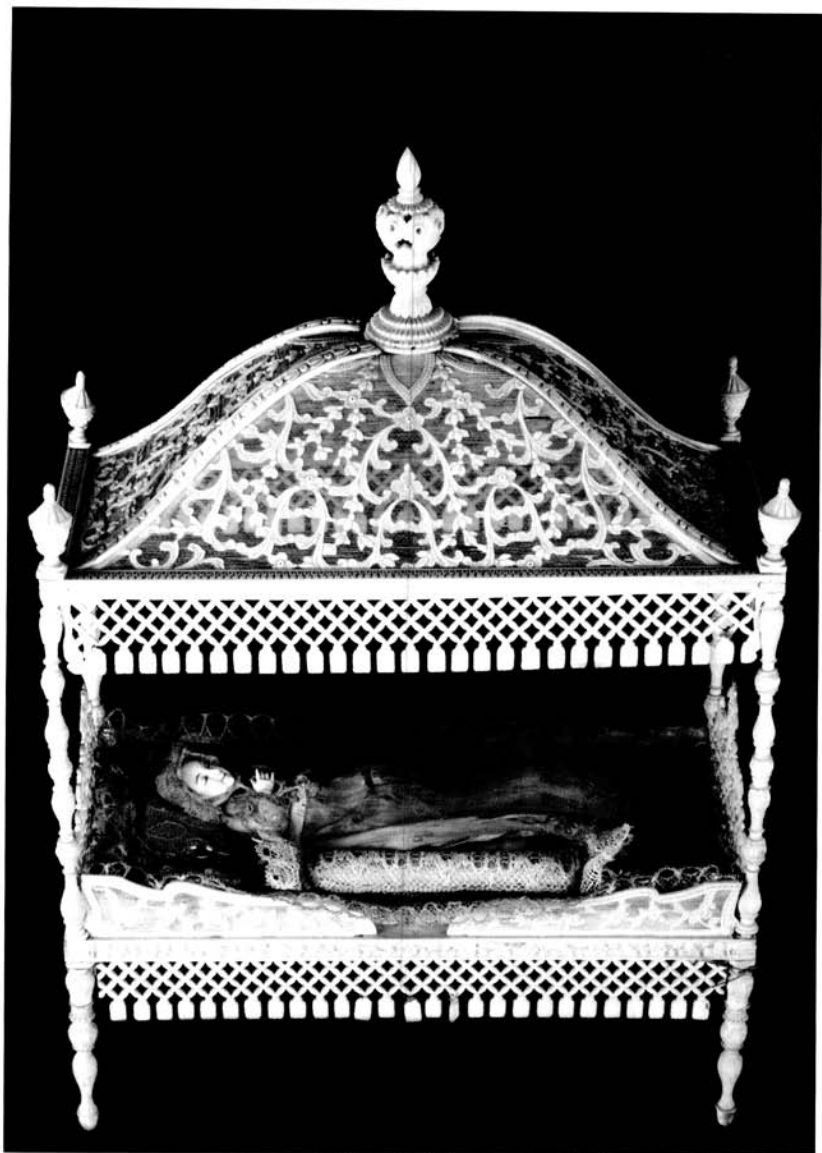
CHAPTER III

La Dormición de Guadua

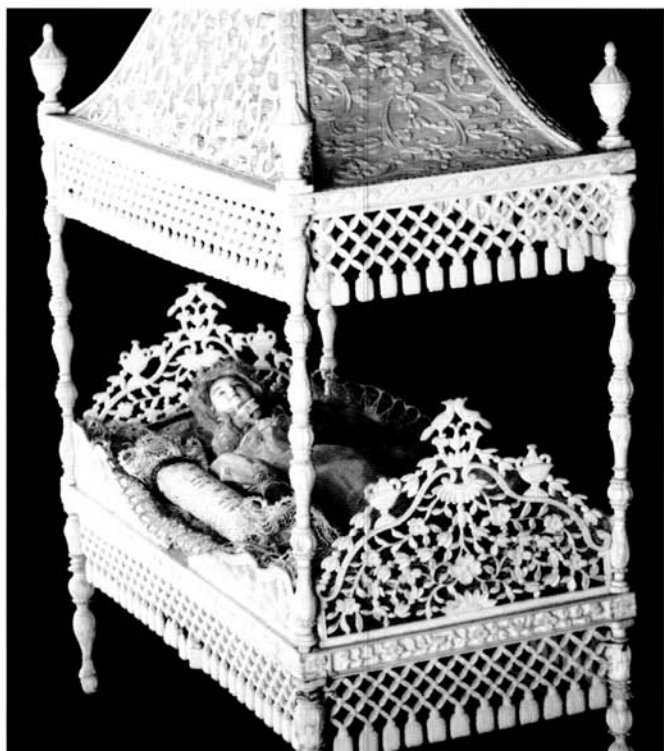


The 17th century image of *La Dormición de la Virgen Maria* or *La Niña Dormida* (Our Blessed Mother as an infant fast asleep), shown above, which combines filigree ivory carving and the finest of Philippine weaves, is possibly the work of a Chinese artisan from the Chinese Parian in Guagua, Pampanga, who took directions for the piece from a Spanish friar with a special devotion to the Blessed Mother. The bed upon which the Baby Mary is fast asleep perfectly replicates a Spanish four poster canopy bed. The ivory craftsmanship is so fine that elements of the ivory canopy above her and in the sideboards that have so thoughtfully been installed to prevent her from rolling over the edge of the bed in her sleep, are as fine as human hair. Commissioned for installation in the family oratory it has been in the possession of the Velez-Zaragoza family for almost three centuries.

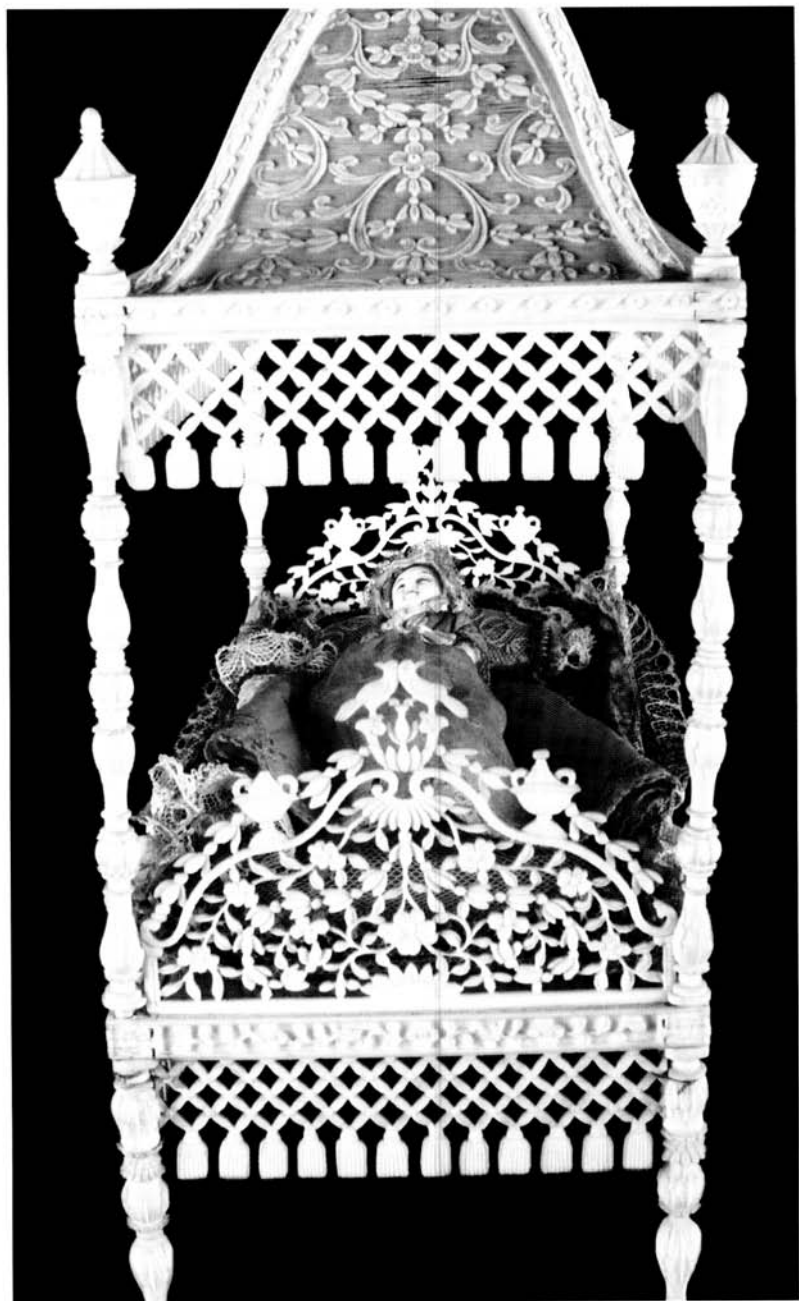




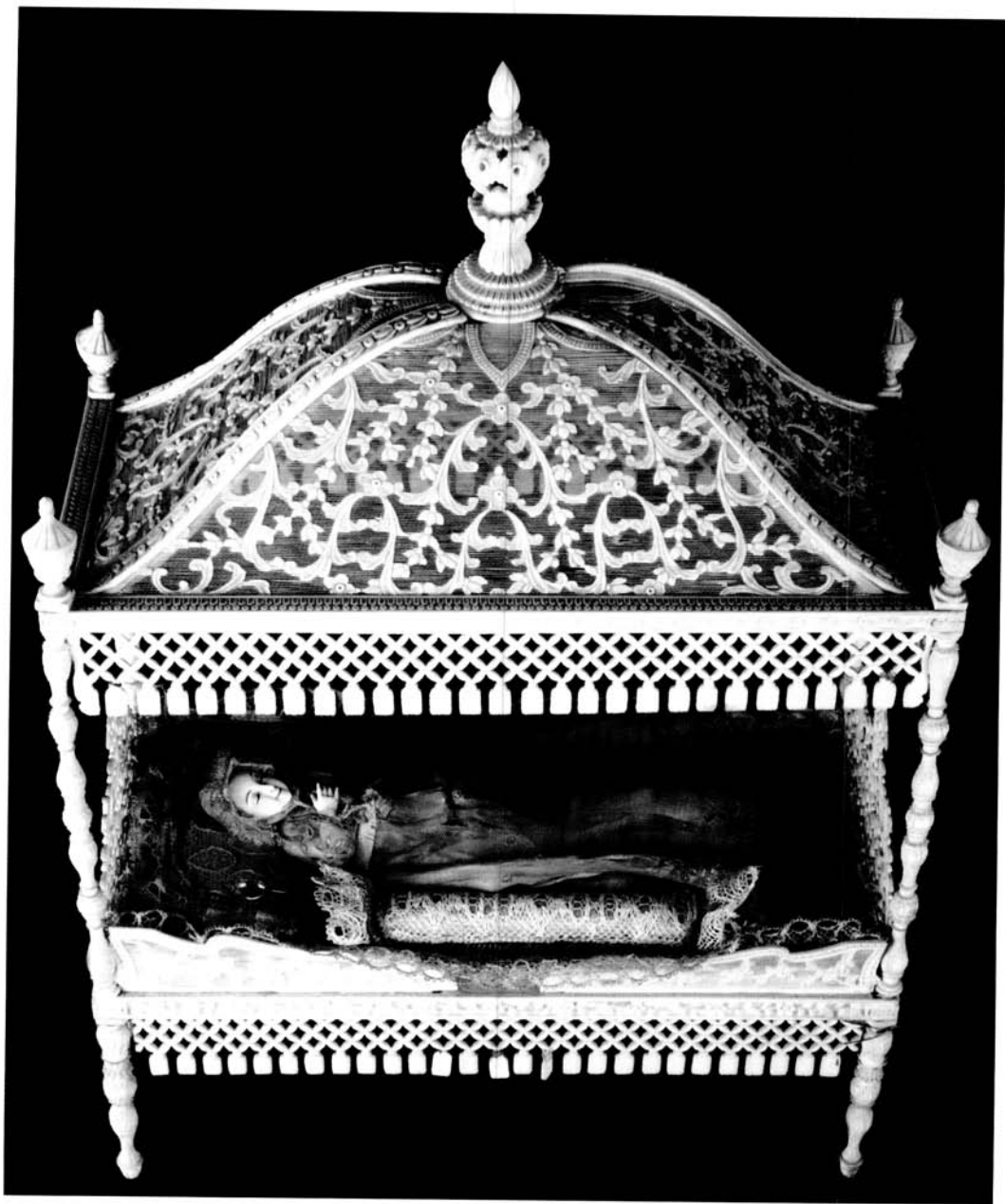
The solid ivory image of the Infant Mary is five inches long and is dressed in an outfit sewn from *nipis* or pineapple fiber. The pillows all around her are similarly sheathed in *nipis* fabric bordered with fine lace. Her bed stands twelve inches high, is eight inches long and four inches wide. No wires or nails hold the piece together, only the perfection of perfectly executed interlocking parts.

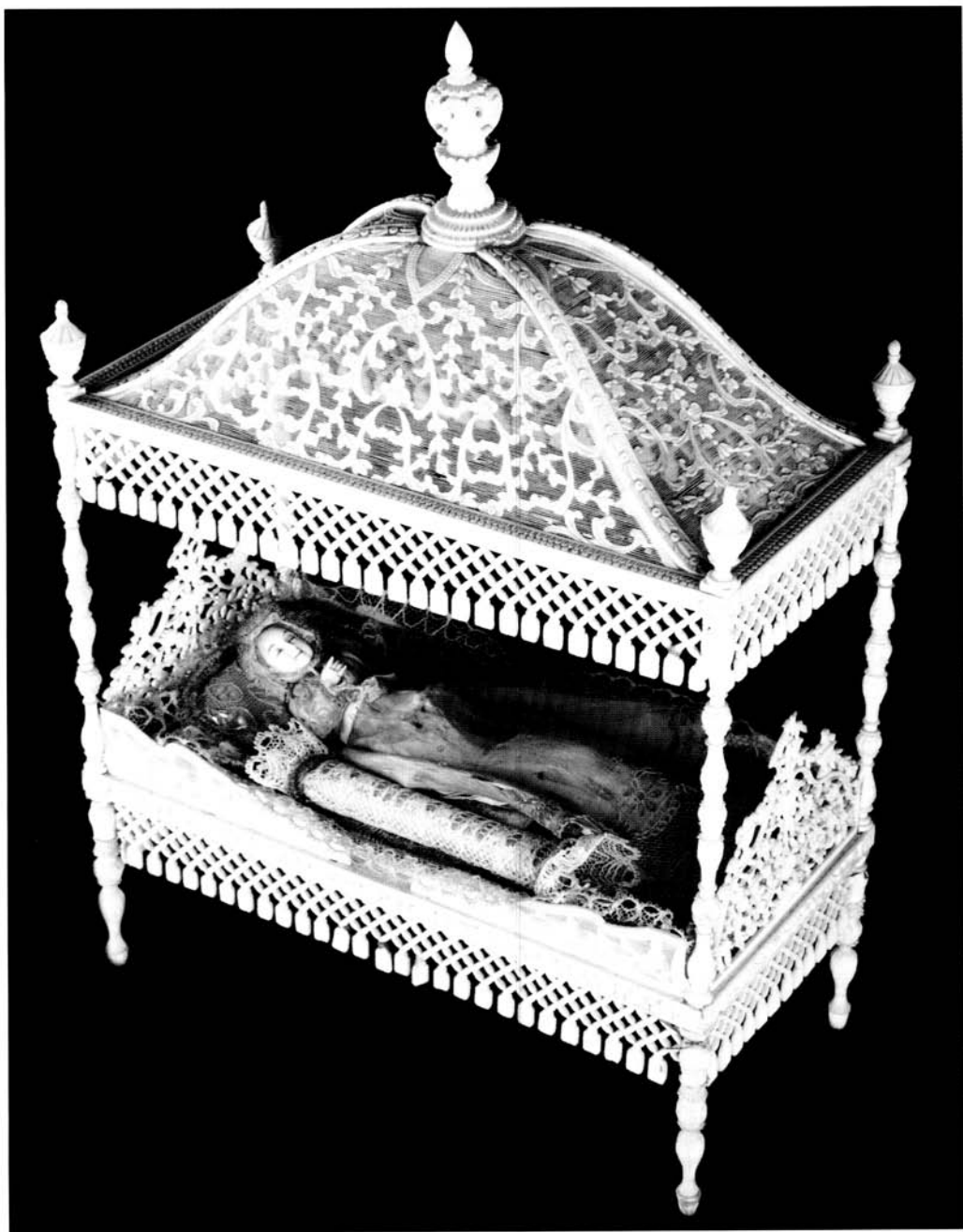


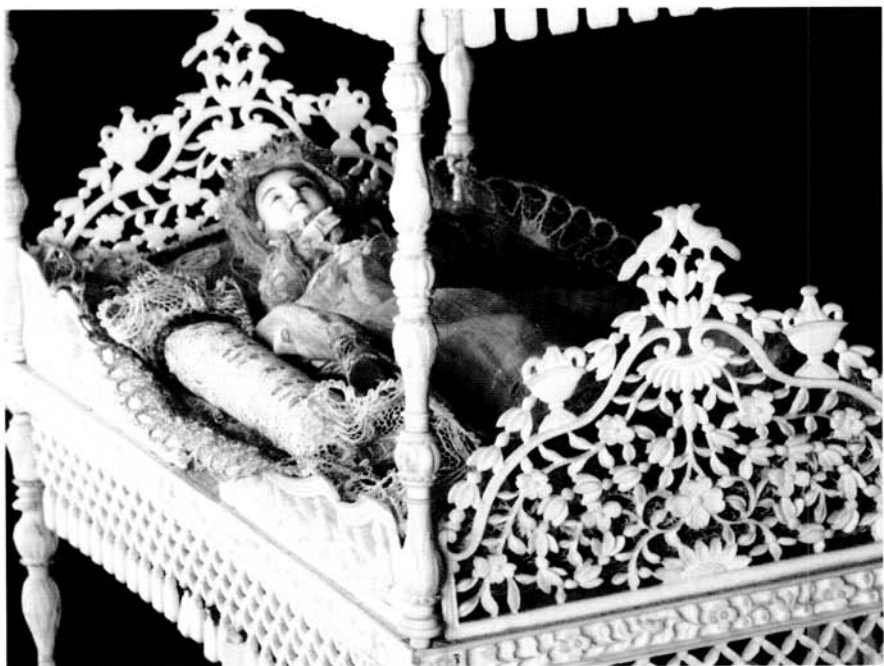




Detail showing the floral and avian motifs in the footboard.

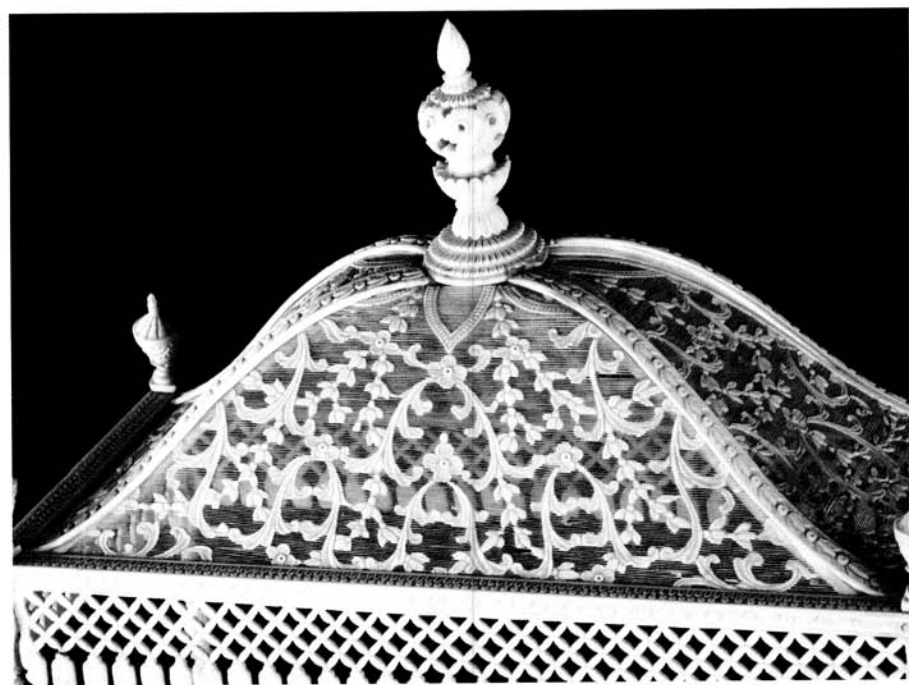
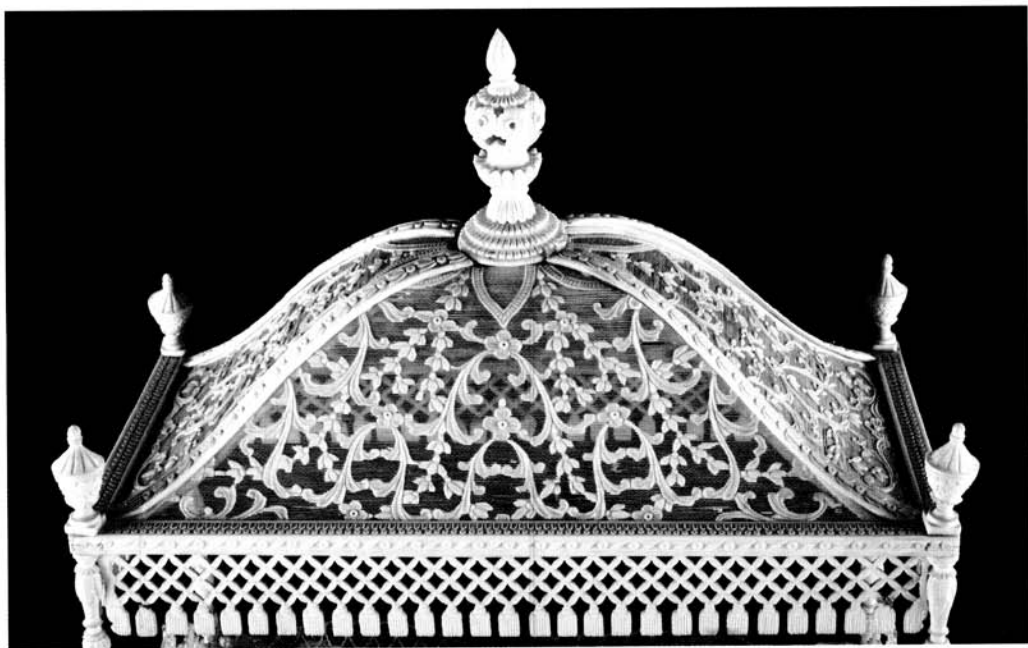






Detail showing the image's Moorish tassels, intricate sideguards, headboard, and footboard.

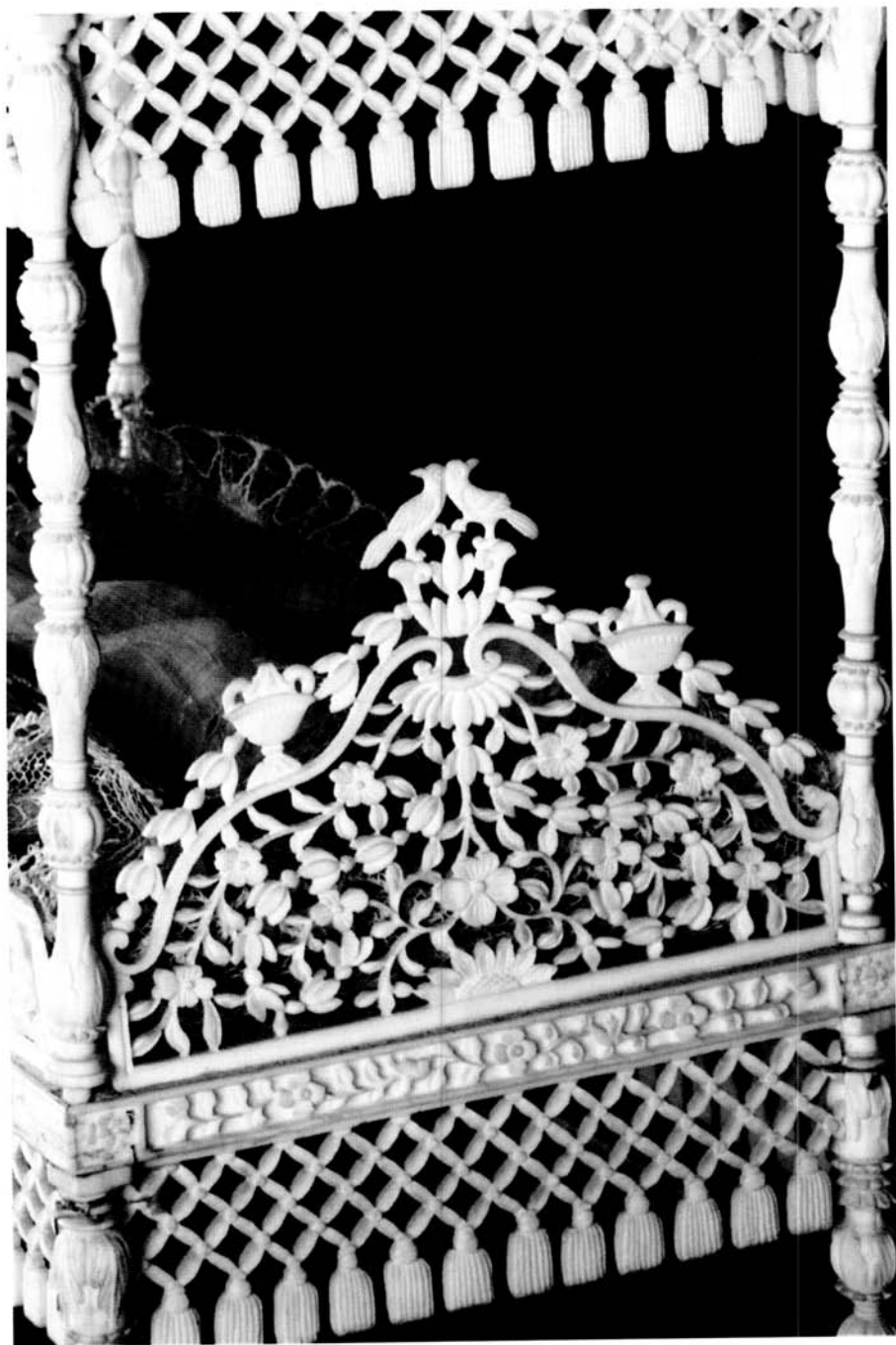






Detail showing the delicate floral motif of the canopy.







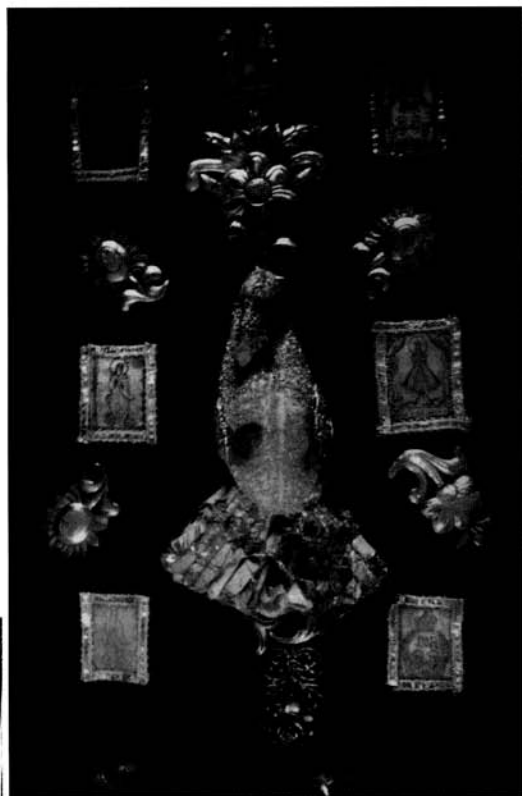
La Divina Pastora or the Divine Shepherdess is an 18th century ivory miniature image of our blessed Virgin Mary. She sits under a tree festooned with a variety of birds, flowers, and animals, which is made entirely of glass. The solid ivory image is six inches high.



An 18th century solid ivory image of Saint Joseph and the Child Jesus, gilded in solid gold and hand-painted *estofado*. Saint Joseph's crown, the tool basket carried by Jesus and the tools in it are fashioned of 22 karat gold. The image is 13 inches high and stands on a 5 inch base.



The ivory statue of Santa Lucia was carved in the Chinese Parian of Guagua, Pampanga in the 19th century. It is dressed in finely embroidered gold threads. The image is 13 inches high and the gilded base is 5 inches high.



An 18th century collection of scapulars from Guagua, Pampanga, made from gold and silver threads



Hand painted *escapularios* worn by farmers and fishermen from Guagua, Pampanga.



A rare 18th century handpainted scapular of a Spanish sailor seeing a miraculous apparition of saints and Jesus Christ. Guagua, Pampanga.