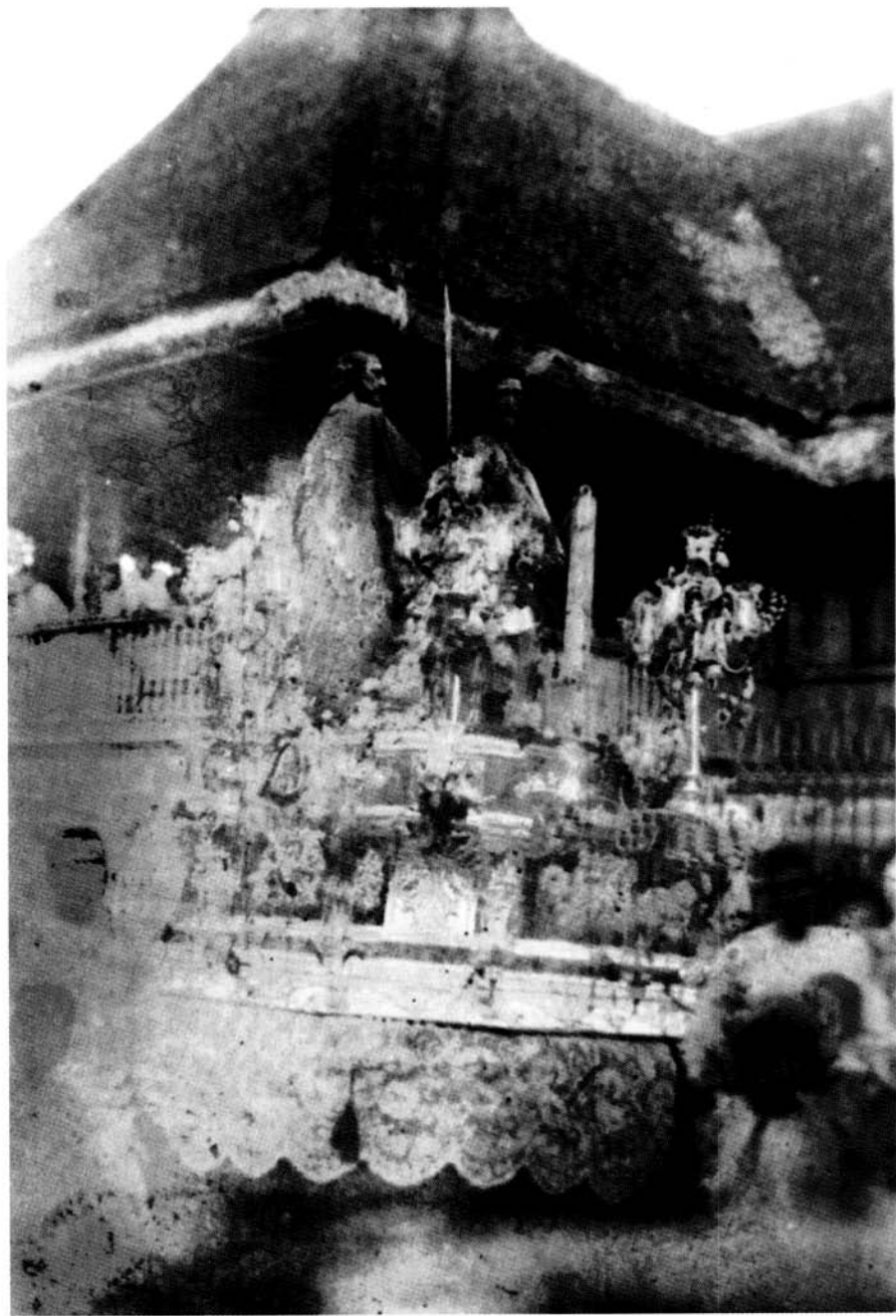
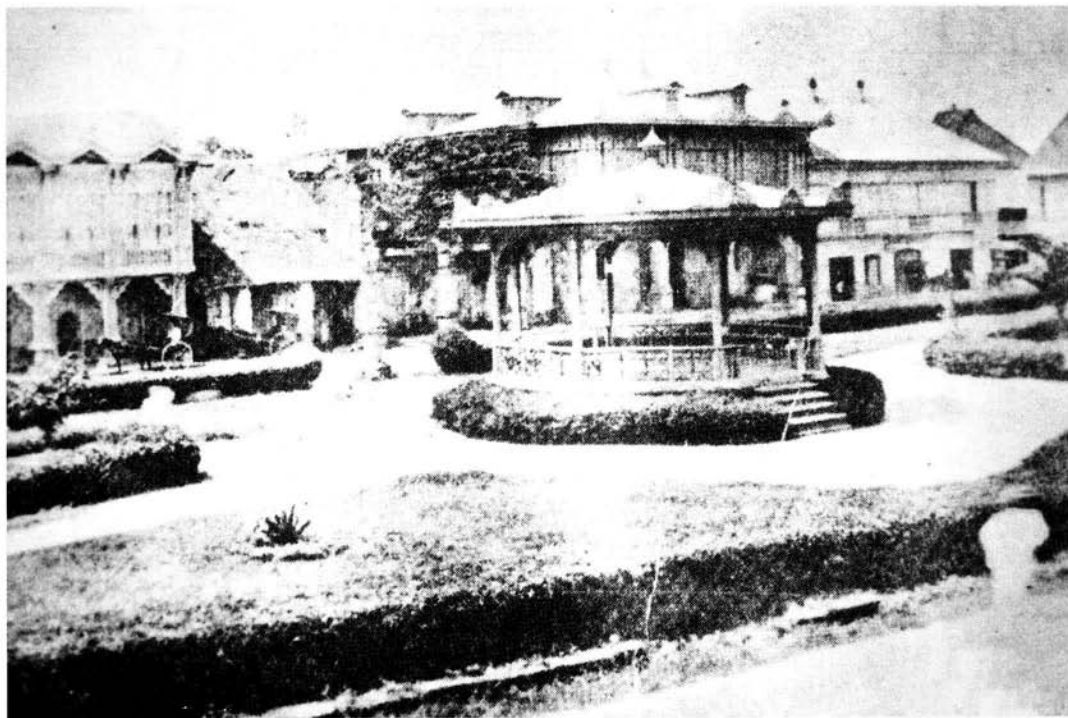


CHAPTER I

Guagua, Pampanga



A family carroza, from a barrio of Guagua, Pampanga, 1890. (ZA)



The town plaza of Guagua, Pampanga with its glorieta, 1895. (ZA)

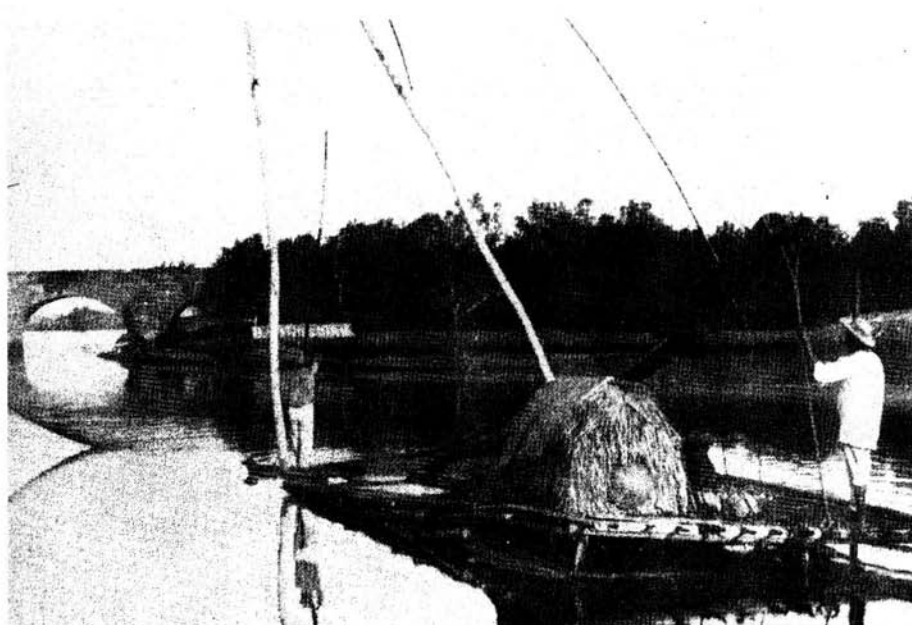
Guagua, Pampanga is located almost at the center of the island of Luzon. This town lies on flat land by the banks of Guagua River. The word “uaua”, the glotal accent after the last vowel, means the mouth of the river banks. The name Pampango means people living by the banks of the river. This province was founded in 1571 a few months after the founding of Manila. It was discovered by Martin de Goiti with a force of 80 soldiers. The two big rivers crossing Pampanga are Rio Grande and Rio Chico.



Interior of the chapel of the Guagua monastery, 1890. (ZA)



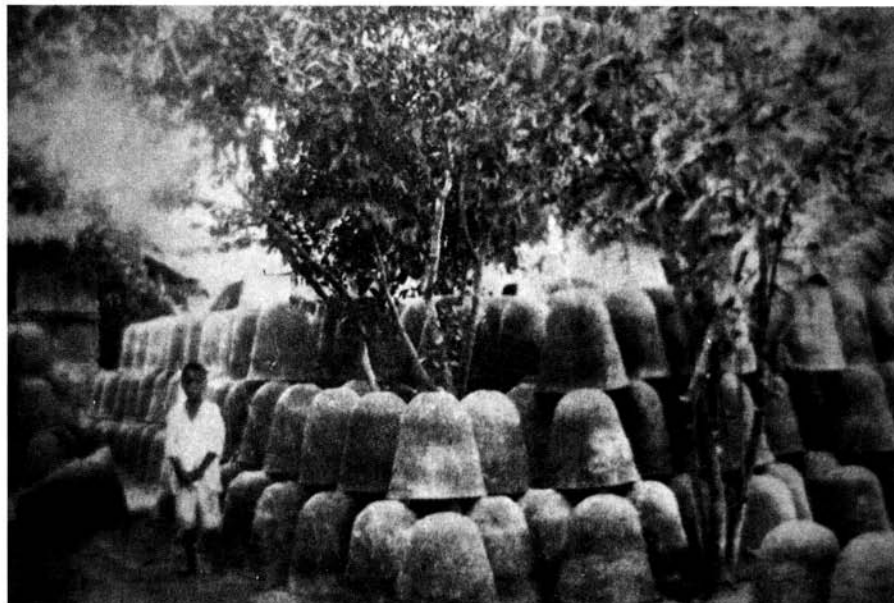
The receiving room of the Guagua monastery, 1890. (ZA)



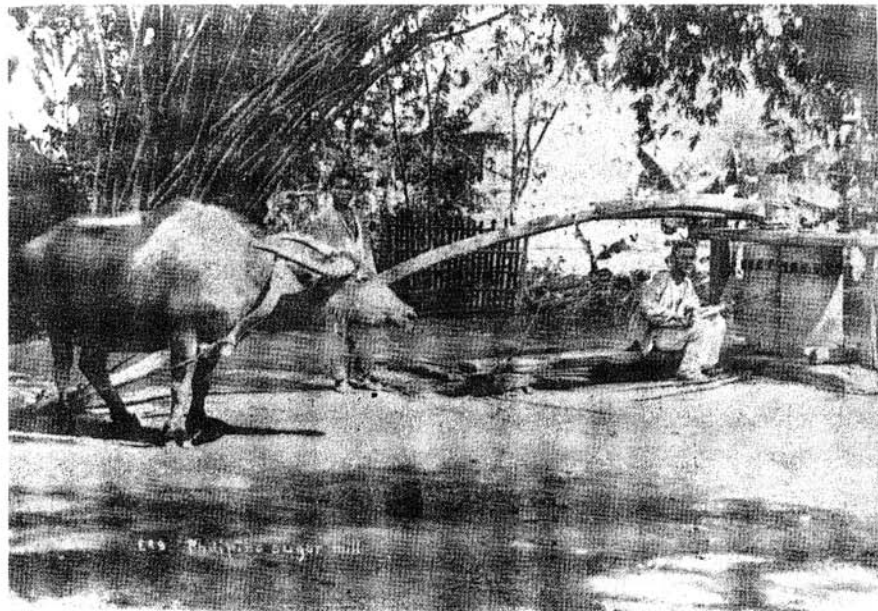
The Rio Grande de la Pampanga was the major thoroughfare for commerce and transportation of the province, 1890. (ZA)



El Rio de Guagua, Pampanga was a busy port filled with *cascos* or cargo boats, 1890.(ZA)



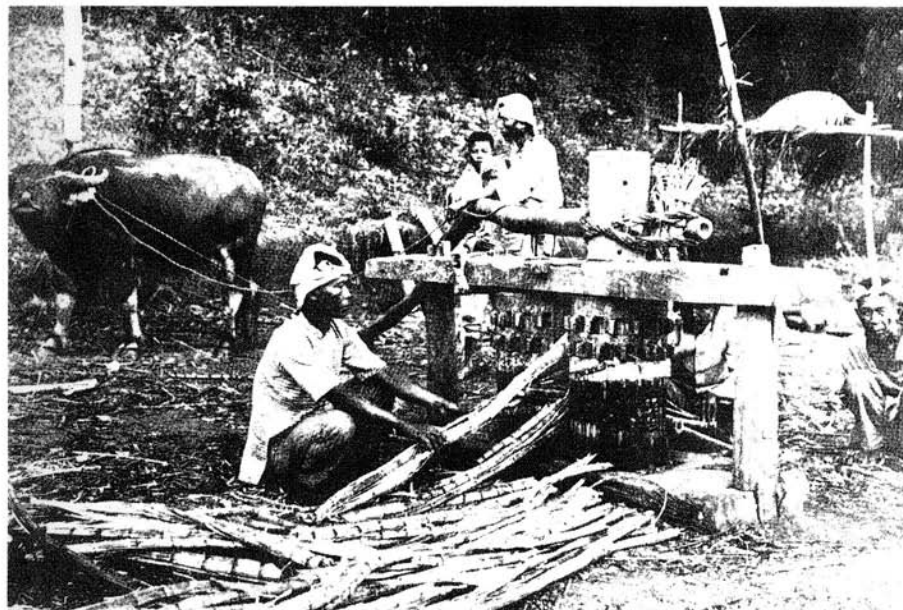
The terrecotta pilones jars were used to filter sugar, Pampanga, 1895. (ZA)



A typical small farm backyard sugar mill, Guagua, Pampanga, 1898. (ZA)



Farmers unloading sugarcane from carabao drawn carts at a sugar mill in Floridablanca, Pampanga, 1900. (ZA)



Milling sugar with the help of a carabao, 1914. (ZA)



Spanish and Filipino children in a *Flores de Mayo* procession in Guagua, Pampanga, 1898. (ZA)



A Santacruzán *Flores de Mayo* procession in Guagua, Pampanga, 1920. (ZA)



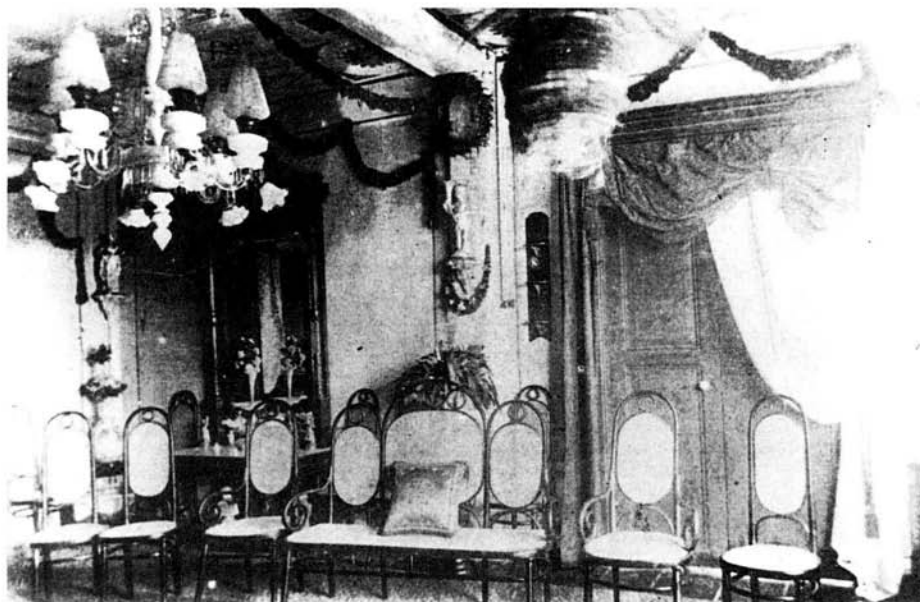
A barrio funeral procession in Guagua, Pampanga, 1898.(ZA)



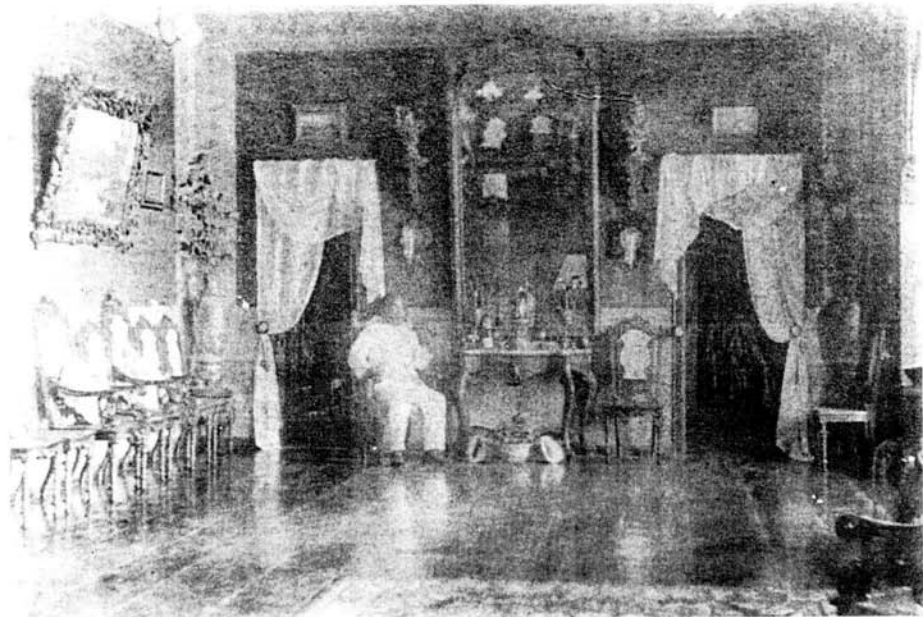
A simple barrio funeral procession with a well decorated carroza accompanied by a large band of musicians, Guagua, Pampanga, 1912. (ZA)



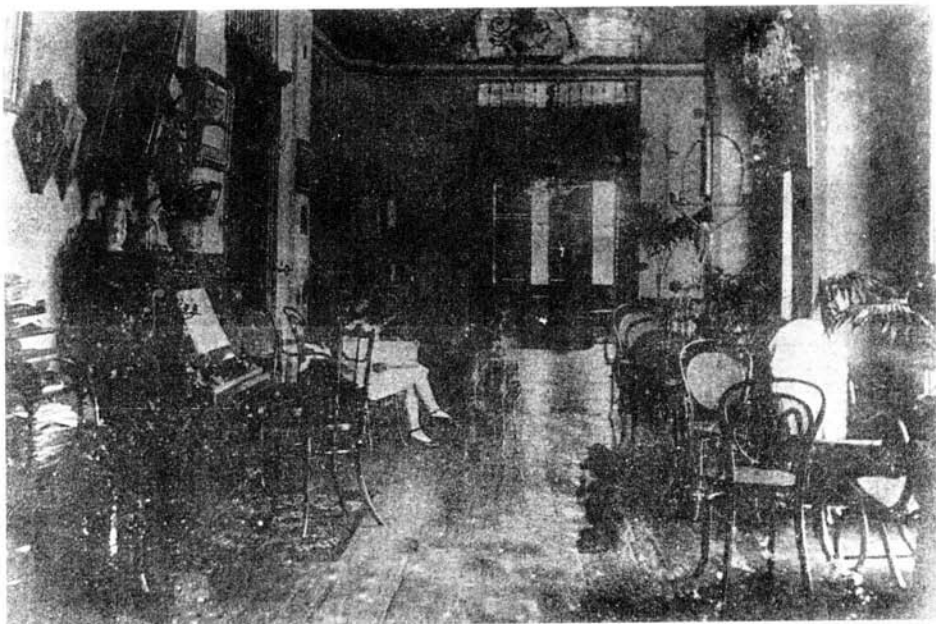
Interior of the living room of an affluent family in Guagua, Pampanga, 1900. (ZA)



A ballroom decorated for a family feast in Guagua, Pampanga 1905. (ZA)



Interior of a living room, Guagua, Pampanga 1900. (ZA)



A music room, Guagua Pampanga 1901.(ZA)



Lahar flows down from Mount Pinatubo, destroying Guagua and many other Pampango and Zambales towns, 1991 to 1996. (ZA)



Lava and lahar flowing down Mount Pinatubo, 1991. (ZA)



Lahar flooding in Guagua, Pampanga, 1994. (ZA)